

Loud Speaker

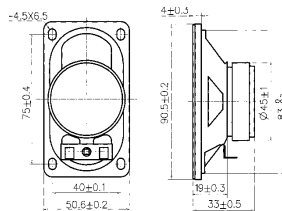
SN5090S001



DIMENSIONS

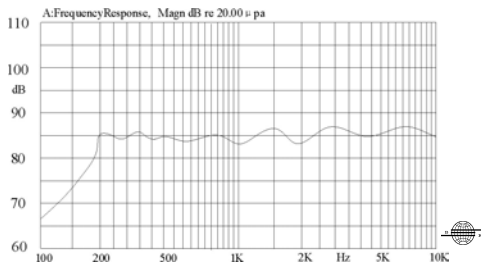
UNIT:mm

Tolerance: ± 0.5 mm



SPECIFICATIONS

FREQUENCY RESPONSE



Rated Impedance	Ω	$8 \pm 15\%$
Rated Input Power	W	3
Maximum Input Power	W	5
Resonant Frequency	Hz	$200 \pm 20\%$
Sound Pressure Level 1W/0.5m(AVG0.8,1.0,1.2,1.5)KHz	dB	88 ± 3
Weight	g	53
Operating Temperature Range	$^{\circ}\text{C}$	-10~+40
Storage Temperature Range	$^{\circ}\text{C}$	-20~+80