

Receiver

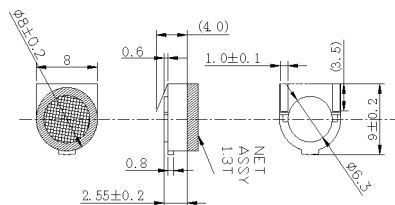
SM08R001



DIMENSIONS

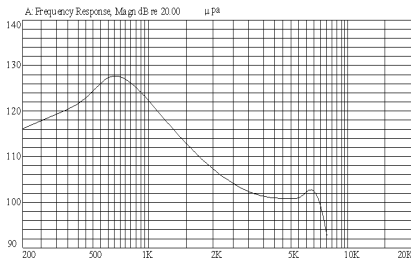
UNIT:mm

Tolerance: ± 0.2 mm



SPECIFICATIONS

FREQUENCY RESPONSE



Rated Impedance	Ω	$32 \pm 15\%$
Rated Input Power	mW	10
Maximum Input Power	mW	30
Rated Freq.Range	Hz	300~3400
Sensitivity	dB	120 ± 3 at 570mV/1kHz
Weight	g	1.0
Operating Temperature Range	$^{\circ}\text{C}$	-20~+40
Storage Temperature Range	$^{\circ}\text{C}$	-30~+80