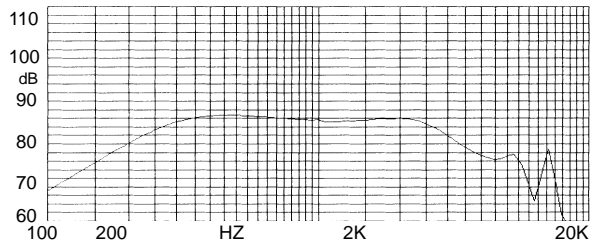


Receiver

SM38R001



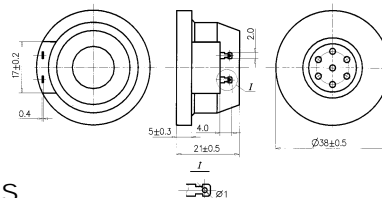
FREQUENCY RESPONSE



DIMENSIONS

UNIT:mm

Tolerance: ± 0.5 mm



SPECIFICATIONS

DC Resistance	Ω	135 ± 15
AC Impedance	Ω	150 ± 30
Sensitivity	dB	115 ± 2 at 1mW
Frequency Range	Hz	200~400
THD		$\leq 3\%$
Operating Temperature	$^{\circ}\text{C}$	-20~+55
Weight	g	39