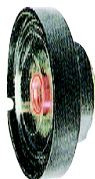


Speaker

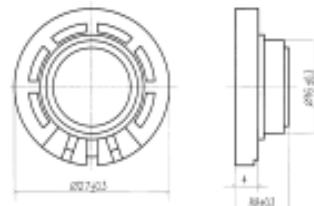
SM27S001



DIMENSIONS

UNIT:mm

Tolerance:± 0.5mm



SPECIFICATIONS

Rated Impedance	Ω	16 ± 20%
Rated Input Power	W	0.1
Maximum Input Power	W	0.2
Resonant Frequency	Hz	600 ± 25%
S.P.L@0.1w/0.1m@1kHz	dB	78 ± 3
Weight	g	3.7
Operating Temperature Range	℃	-10~+40
Storage Temperature Range	℃	-40~+80

FREQUENCY RESPONSE

