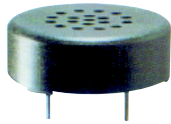


# Speaker

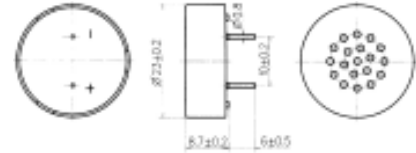
## SM23S004P



### DIMENSIONS

UNIT:mm

Tolerance:  $\pm 0.5\text{mm}$



### SPECIFICATIONS

|                             |                    |                 |
|-----------------------------|--------------------|-----------------|
| Rated Impedance             | $\Omega$           | $8 \pm 20\%$    |
| Rated Input Power           | W                  | 0.08            |
| Maximum Input Power         | W                  | 0.15            |
| Resonant Frequency          | Hz                 | $1500 \pm 20\%$ |
| S.P.L@0.1w/0.1m@1kHz        | dB                 | $73 \pm 3$      |
| Weight                      | g                  | 3               |
| Operating Temperature Range | $^{\circ}\text{C}$ | $-20 \sim +40$  |
| Storage Temperature Range   | $^{\circ}\text{C}$ | $-30 \sim +70$  |

### FREQUENCY RESPONSE

