

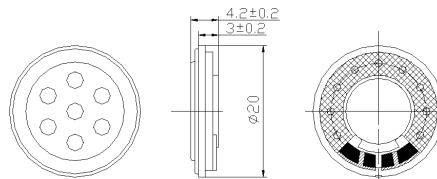
# Speaker

## SM20S007



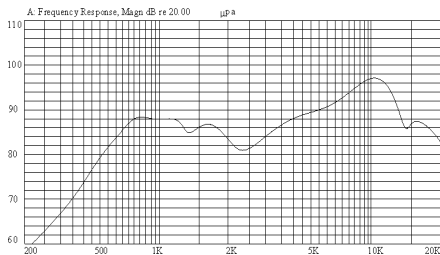
### DIMENSIONS

UNIT:mm  
Tolerance:  $\pm 0.2\text{mm}$



### SPECIFICATIONS

#### FREQUENCY RESPONSE



Rated Impedance	$\Omega$	$8 \pm 15\%$
Rated Input Power	W	0.3
Maximum Input Power	W	0.5
Resonant Frequency	Hz	$700 \pm 20\%$
S.P.L@0.1w/0.1m@1kHz	dB	$88 \pm 3$
Weight	g	1.5
Operating Temperature Range	$^{\circ}\text{C}$	$-30 \sim +40$
Storage Temperature Range	$^{\circ}\text{C}$	$-40 \sim +80$