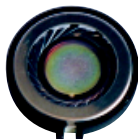


Speaker

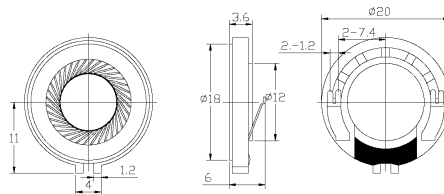
SM20S002



DIMENSIONS

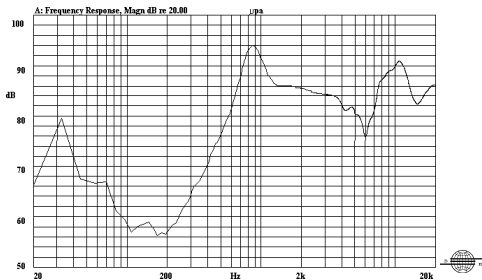
UNIT:mm

Tolerance: ± 0.5 mm



SPECIFICATIONS

FREQUENCY RESPONSE



Rated Impedance	Ω	$8 \pm 15\%$
Rated Input Power	W	0.5
Maximum Input Power	W	0.8
Resonant Frequency	Hz	$800 \pm 20\%$
S.P.L@0.1w/0.1m@1kHz	dB	86 ± 3
Weight	g	2.4
Operating Temperature Range	$^{\circ}\text{C}$	-10~+40
Storage Temperature Range	$^{\circ}\text{C}$	-40~+80