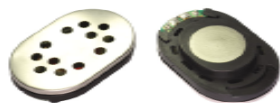


Speaker

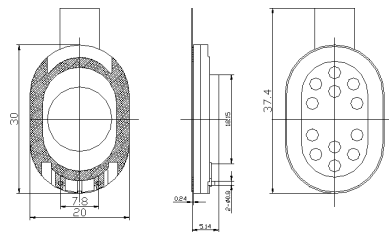
SM2030S002



DIMENSIONS

UNIT:mm

Tolerance: ± 0.2 mm



SPECIFICATIONS

Rated Impedance	Ω	$8 \pm 15\%$
Rated Input Power	W	0.5
Maximum Input Power	W	1.0
Resonant Frequency	Hz	$700 \pm 20\%$
S.P.L@0.1w/0.1m@1kHz	dB	93 ± 3
Weight	g	1.5
Operating Temperature Range	$^{\circ}\text{C}$	$-30 \sim +40$
Storage Temperature Range	$^{\circ}\text{C}$	$-40 \sim +80$

FREQUENCY RESPONSE

