

Speaker

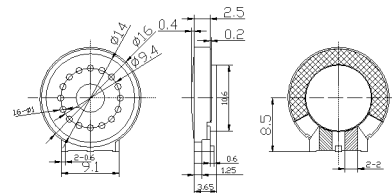
SM16S002



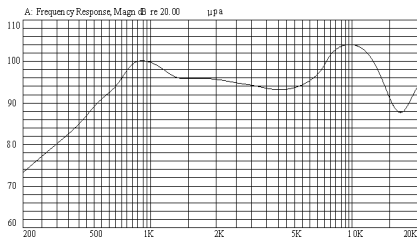
DIMENSIONS

UNIT:mm

Tolerance: ± 0.2 mm



FREQUENCY RESPONSE



SPECIFICATIONS

Rated Impedance	Ω	$8 \pm 15\%$
Rated Input Power	W	0.5
Maximum Input Power	W	1.0
Resonant Frequency	Hz	$850 \pm 20\%$
S.P.L@0.1w/0.1m@1kHz	dB	99 ± 3
Weight	g	1.5
Operating Temperature Range	$^{\circ}\text{C}$	-30~+40
Storage Temperature Range	$^{\circ}\text{C}$	-40~+80