

Speaker

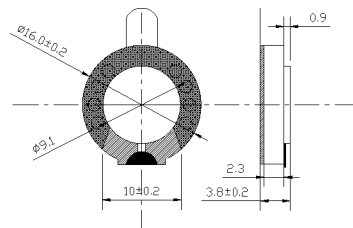
SM16S001



DIMENSIONS

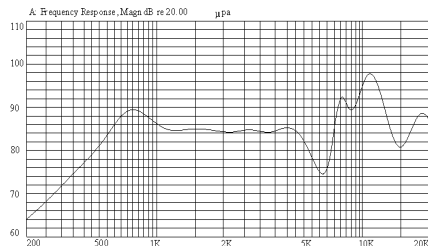
UNIT:mm

Tolerance:± 0.2mm



SPECIFICATIONS

FREQUENCY RESPONSE



Rated Impedance	Ω	$8 \pm 15\%$
Rated Input Power	W	0.3
Maximum Input Power	W	0.5
Resonant Frequency	Hz	$850 \pm 20\%$
S.P.L @0.1w/0.1m@1kHz	dB	86 ± 3
Weight	g	1.5
Operating Temperature Range	$^{\circ}\text{C}$	-30~+40
Storage Temperature Range	$^{\circ}\text{C}$	-40~+80