

# Speaker

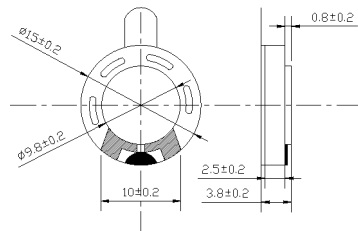
## SM15S008



### DIMENSIONS

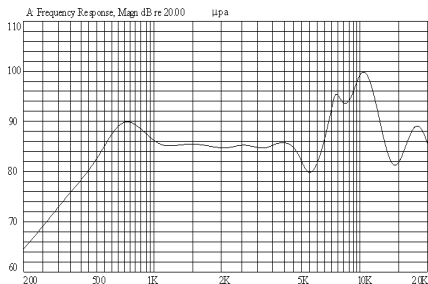
UNIT:mm

Tolerance:  $\pm 0.2$ mm



### SPECIFICATIONS

### FREQUENCY RESPONSE



Rated Impedance	$\Omega$	$8 \pm 15\%$
Rated Input Power	W	0.2
Maximum Input Power	W	0.3
Resonant Frequency	Hz	$850 \pm 20\%$
S.P.L@0.1w/0.1m@1kHz	dB	$86 \pm 3$
Weight	g	1.5
Operating Temperature Range	$^{\circ}\text{C}$	$-30 \sim +40$
Storage Temperature Range	$^{\circ}\text{C}$	$-40 \sim +80$