

# Speaker

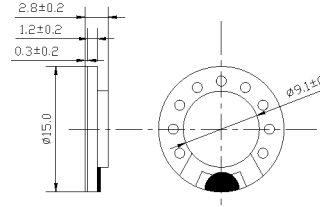
## SM15S003



### DIMENSIONS

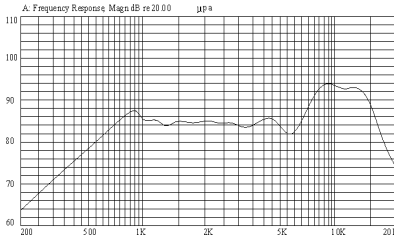
UNIT:mm

Tolerance:± 0.2mm



### SPECIFICATIONS

### FREQUENCY RESPONSE



Rated Impedance	Ω	8 ± 15%
Rated Input Power	W	0.2
Maximum Input Power	W	0.3
Resonant Frequency	Hz	950 ± 20%
S.P.L.@0.1w/0.1m@1kHz	dB	85 ± 3
Weight	g	1.5
Operating Temperature Range	°C	-30~+40
Storage Temperature Range	°C	-40~+80