

Receiver

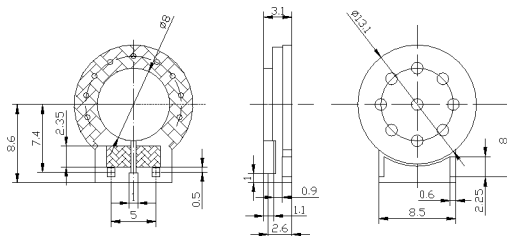
SM13R011



DIMENSIONS

UNIT:mm

Tolerance: ± 0.2mm



SPECIFICATIONS

Rated Impedance	Ω	32 ± 15%
Rated Input Power	mW	10
Maximum Input Power	mW	30
Rated Freq.Range	Hz	300~3400
Sensitivity	dB	104 ± 3 at 179mV/1kHz
Weight	g	1.0
Operating Temperature Range	°C	-20~+40
Storage Temperature Range	°C	-40~+80

FREQUENCY RESPONSE

