

# Receiver

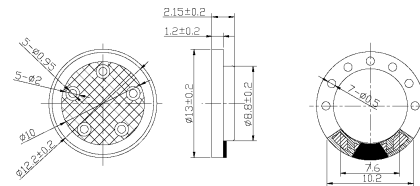
## SM13R007



### DIMENSIONS

UNIT:mm

Tolerance: ± 0.2mm



### SPECIFICATIONS

Rated Impedance	Ω	32 ± 15%
Rated Input Power	mW	10
Maximum Input Power	mW	30
Rated Freq.Range	Hz	300~3400
Sensitivity	dB	106 ± 3 at 100mV/1kHz
Weight	g	0.8
Operating Temperature Range	°C	-10~+40
Storage Temperature Range	°C	-20~+80

### FREQUENCY RESPONSE

