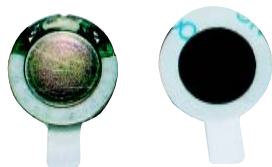


# Receiver

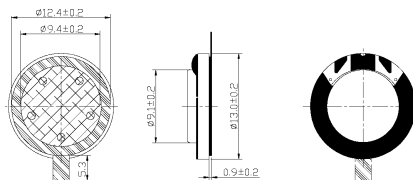
## SM13R004



### DIMENSIONS

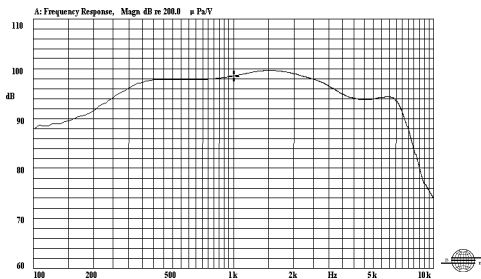
UNIT:mm

Tolerance:  $\pm 0.2$ mm



### SPECIFICATIONS

### FREQUENCY RESPONSE



Rated Impedance	$\Omega$	$32 \pm 15\%$
Rated Input Power	mW	10
Maximum Input Power	mW	30
Rated Freq.Range	Hz	300~3400
Sensitivity	dB	$99 \pm 3$ at 100mV/1kHz
Weight	g	1.1
Operating Temperature Range	$^{\circ}\text{C}$	-10~+40
Storage Temperature Range	$^{\circ}\text{C}$	-30~+80