

# Receiver

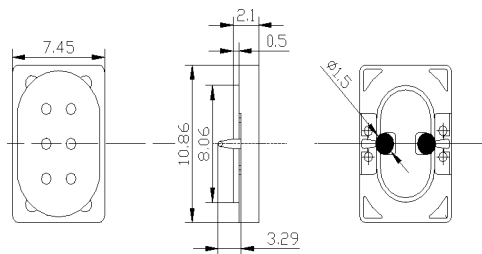
## SM0711R001



### DIMENSIONS

UNIT:mm

Tolerance:  $\pm 0.2$ mm



### SPECIFICATIONS

Rated Impedance	$\Omega$	$32 \pm 15\%$
Rated Input Power	mW	10
Maximum Input Power	mW	30
Rated Freq.Range	Hz	300~3400
Sensitivity	dB	$104 \pm 3$ at 179mV/1kHz
Weight	g	1.0
Operating Temperature Range	$^{\circ}\text{C}$	-10~+40
Storage Temperature Range	$^{\circ}\text{C}$	-20~+80

### FREQUENCY RESPONSE

